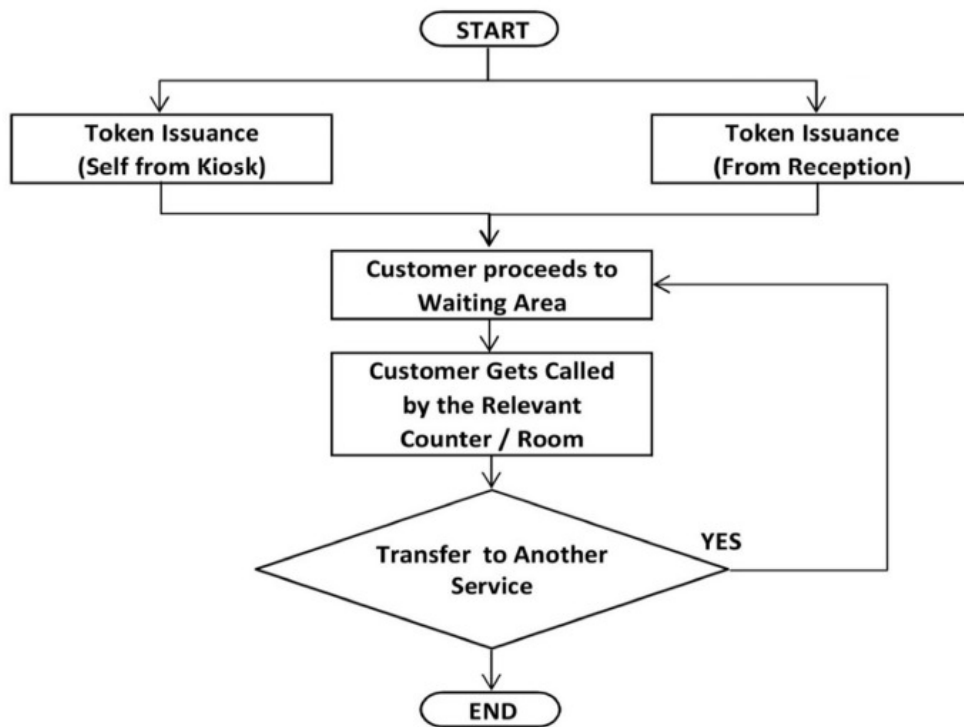


TECHNICAL SPECIFICATION

EQ103 QUEUE MANAGEMENT SYSTEM



System Work Flow:



SPECIFICATIONS FOR QUEUE MANAGEMENT SYSTEM

- 1- **Floor Mount Token Dispenser (Touch Screen) EQ203:** A Touch screen token dispenser is an advanced print on demand token issuing unit that caters for single and multi-service queue systems. It supports minimum (but not limited to) the following functions:
 - a. 15" LCD Touch panel.
 - b. Painted metal body housing (Body Color can match with the site Interior)
 - c. Branding of Company Name & Logo on the Kiosk can also be provided
 - d. Built-in High Speed Thermal Printer Mechanism with minimum 250 mm/s speed
 - e. Support Token Printing Width from 37mm to 80 mm and Token Length can be from 20 mm to 150 mm (as required)
 - f. Built-in Auto-Cutter.
 - g. Support both - Numeric and Alpha-Numeric Token Number sequences
 - h. Built-in PC with minimum configuration of QuadeCore J1900 with Fanless feature
 - i. Communication Interface: Wi-Fi / Cabled-Ethernet /HDMI for TV
 - j. Kiosk Dimensions: Height =1100 mm / Width = 360 mm
 - k. Operating Temperature: 5° to 40°C
- 2- **Virtual Calling Terminals:** This is a windows based applications that a user would use from any authorized PC on the local network to
 - a. Call Next in Queue
 - b. Recall the last called number
 - c. Finish the currently serving token (without calling the next one)
 - d. Manual Transfer the current Token any Service
 - e. Inquire number of customers currently Waiting
- 3- **Smart Media Players:** Windows Application Players Media with MP4 Format and display in LCD screen, Can also display signal from Audio Video and display TV channels on main LCD screen

